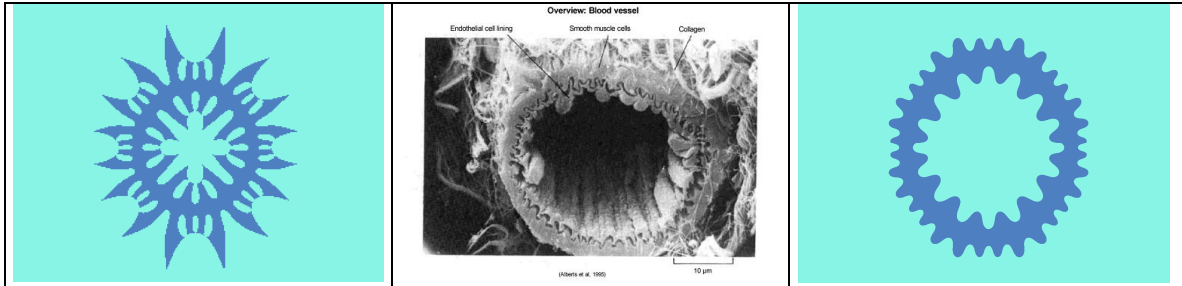
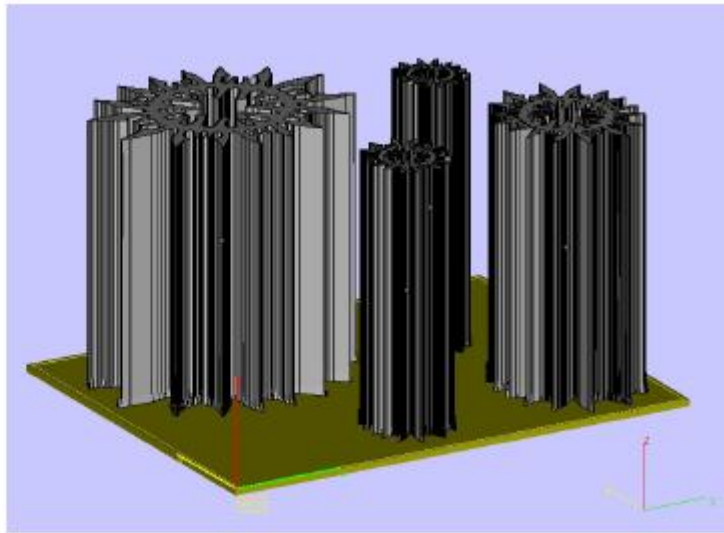
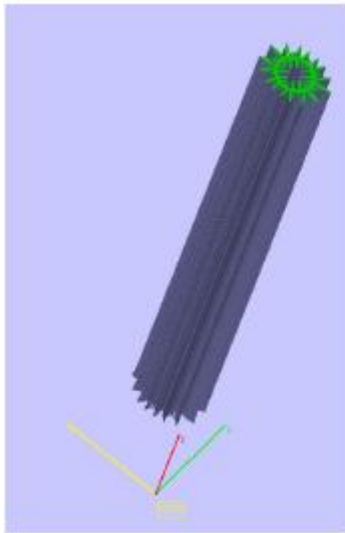
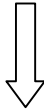


Design and Production of Scaffold for Artificial Blood Vessels (Tissue Engineering) by means of Rapid Prototyping using Fractal Geometry

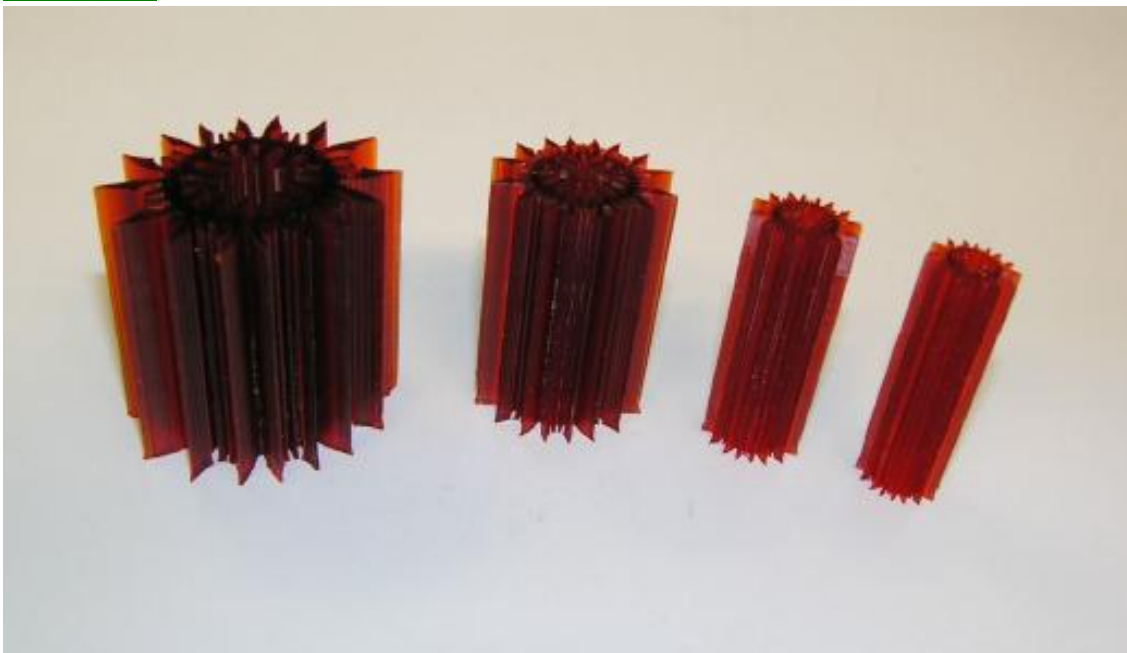
Middle image shows the biological morphology of a real blood vessel. Due to confidential reason a somewhat 'strange' (= dendrite) 3D example (left one) has been manufactured, but the design and production of all kind of fractal images (e.g. the right one) is possible.



Design



Production



Different Scaffolds for Blood Vessels (real measures, compared with one Euro coin)



Other Fractal Objects





© 2007, Fractal Consultancy, Jules Ruis.